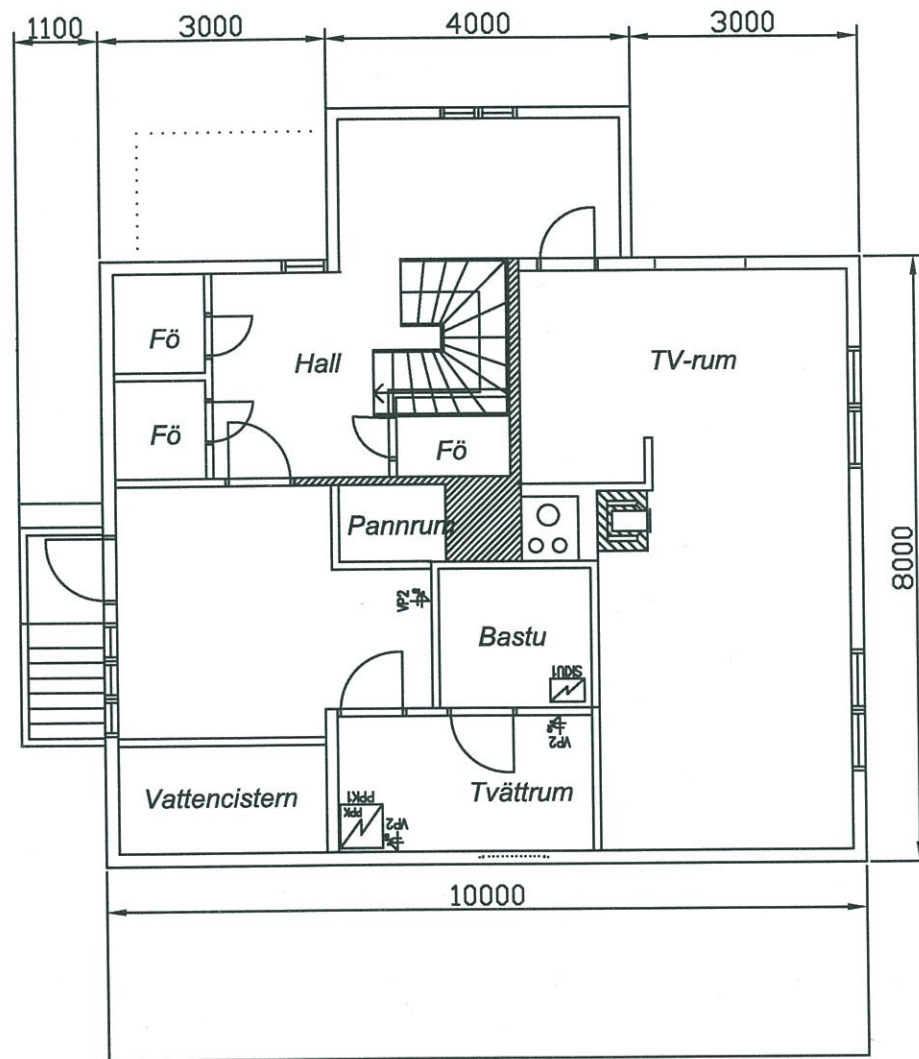
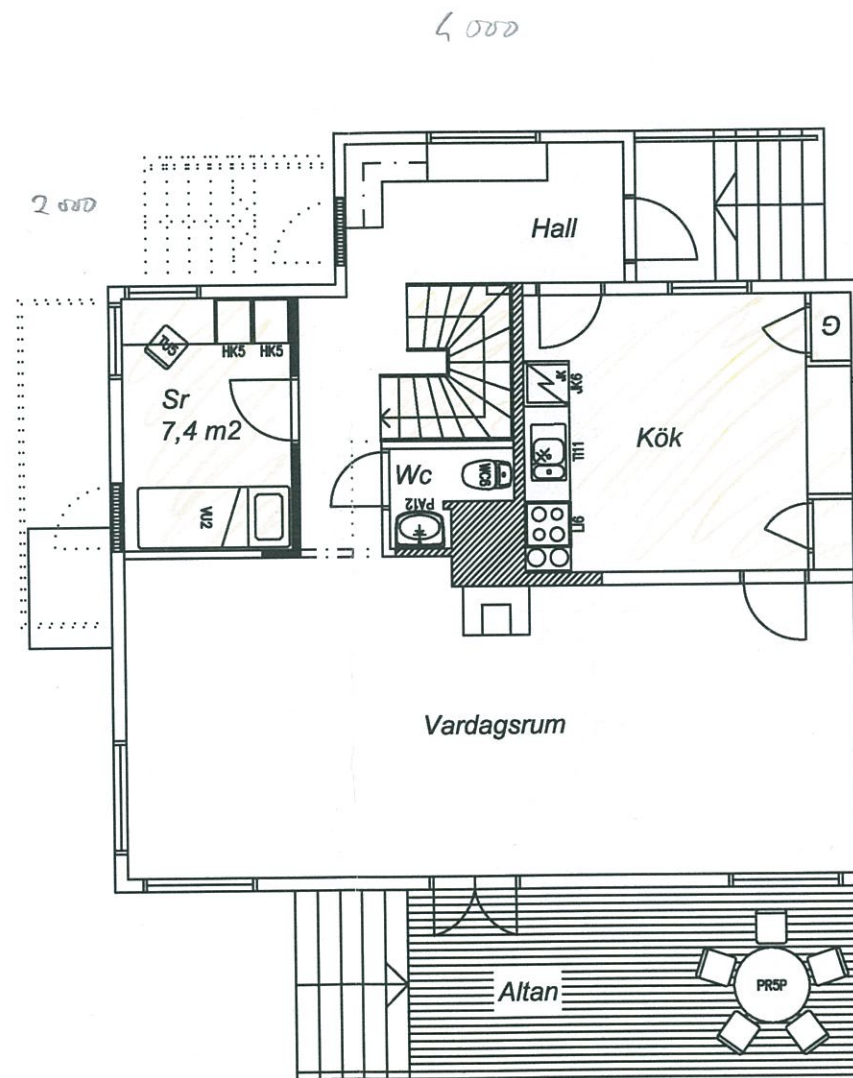


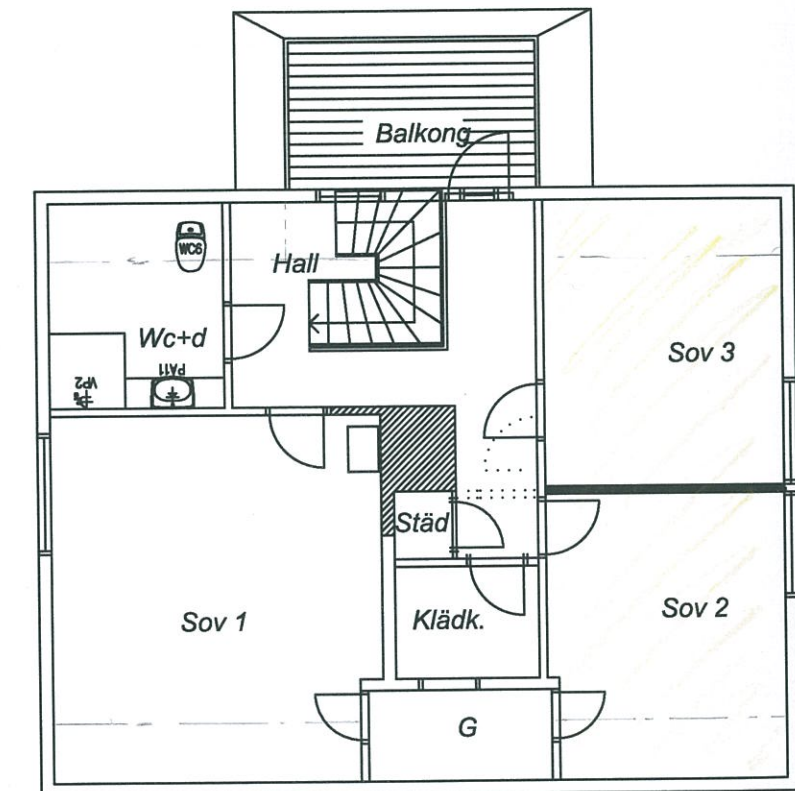
PLAN KÄLLARVÅNING



PLAN 1. VÅNING



PLAN 2. VÅNING



$$\begin{aligned}
 &6,1 \times 10,0 = 61,0 \\
 &+ 0,95 \times 1,2 = + 1,1 \\
 \text{trappor} &- 1,2 \times 1,4 = - 1,7 \\
 G &- 0,6 \times 1,6 = - 1,0 \\
 \text{klh} &- 1,6 \times 2,2 = - 3,5 \\
 \hline
 &53,7 \\
 \text{Br 135} &\text{ överskr } 6,7 = 5\% \\
 &= 141,7
 \end{aligned}$$